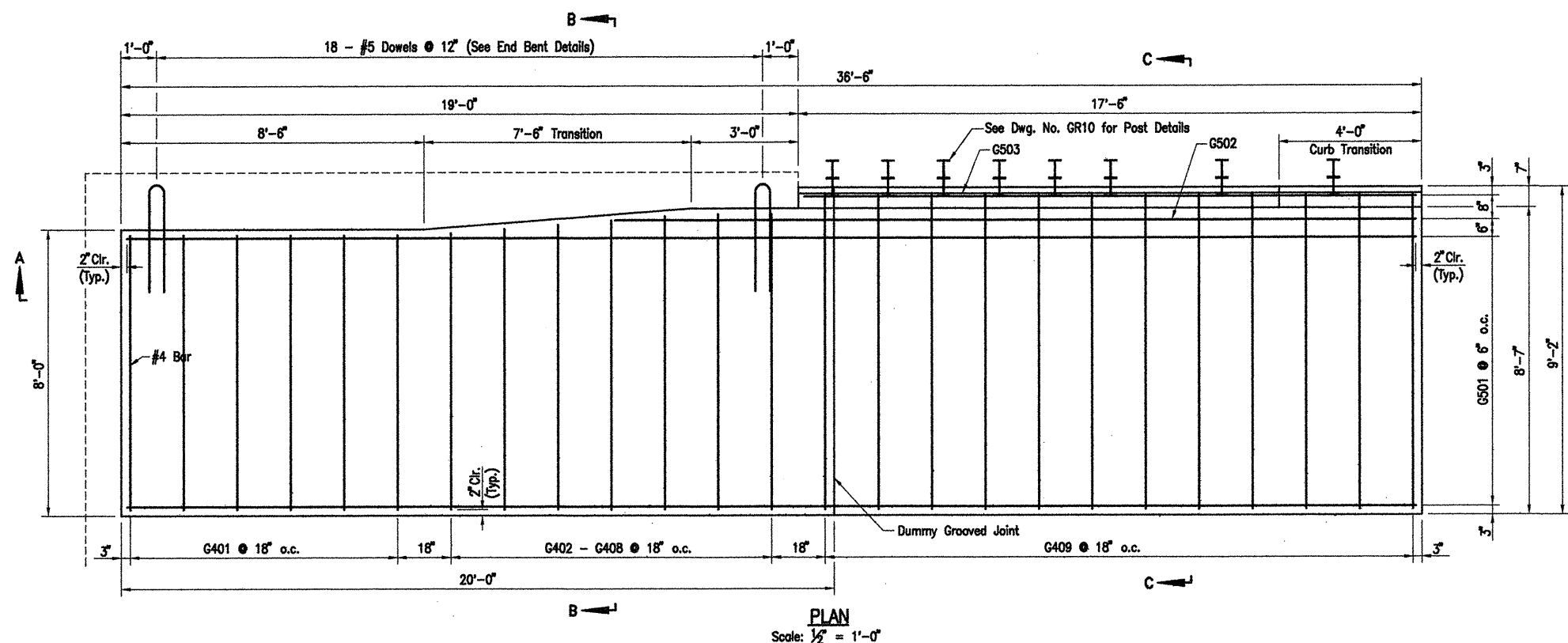
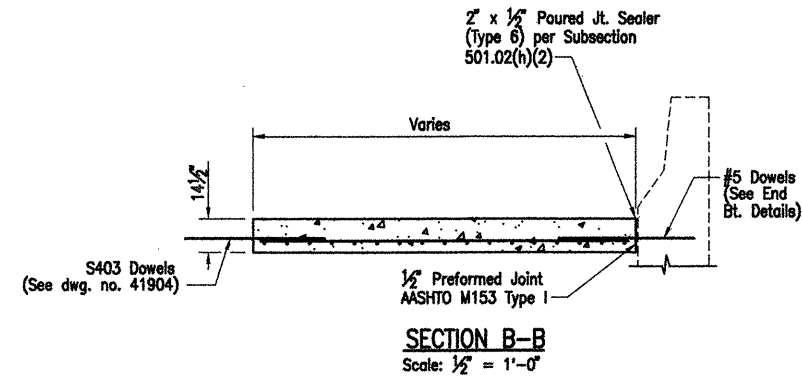
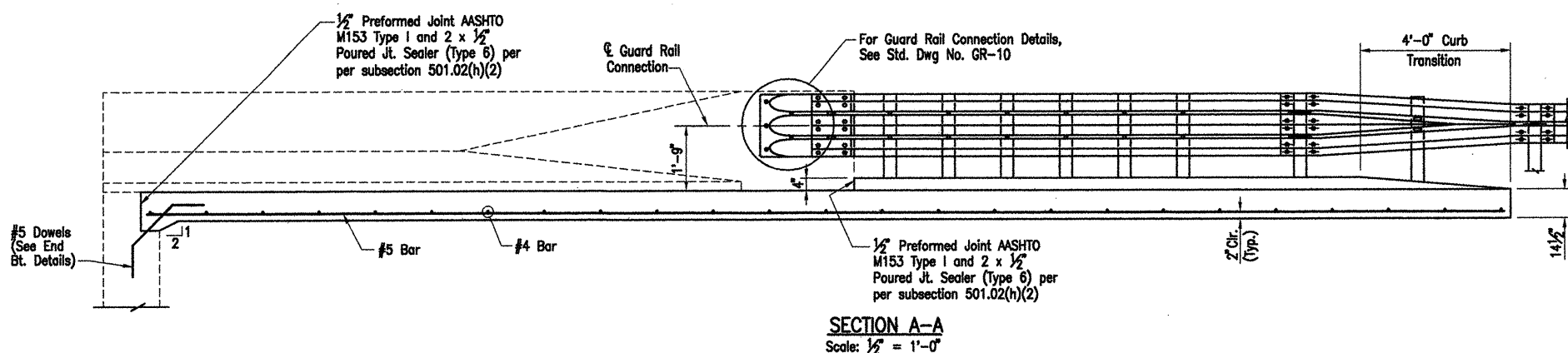
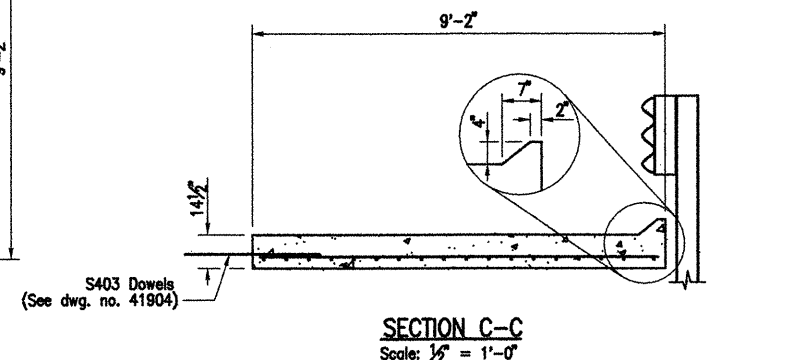


DATE REVISED	DATE FILMED	DATE REVISED	DATE FILMED	FED. ROAD NO.	STATE	FED. AID PROJ. NO.	SHEET NO.	TOTAL SHEETS
					ARK.			
					JOB NO.	110503	100	233
06829 & 07027 APPR. GUTTERS 41905								



Construct gutter curb with height transition as shown if drop inlet is not placed at end of gutter.

Construct gutter curb full height (no height-transition) if drop inlet is placed at end of gutter. Curb height transition placed on drop inlet. See drop inlet details.



BAR LIST FOR ONE GUTTER

Mark	No. Req'd	Length
G401	6	7'-8"
G402 - G408	1 each	7'-10" to 8'-3"
G409	12	8'-10"
G501	16	36'-4"
G502	1	22'-6"
G503	1	17'-2"

QUANTITIES FOR ONE SQUARE APPROACH GUTTER

Shoulder Width(s) feet	Reinforcing Steel lbs.	Concrete c.y.
8'-0"	787	14.4

GENERAL NOTES

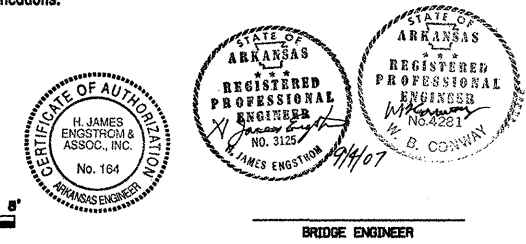
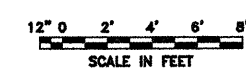
Concrete shall be Class S or Class S (AE) or mixture used for Portland Cement Concrete Pavement.

Reinforcement Steel shall conform to AASHTO M31 or M53, Grade 60.

Approach Gutters will be measured and paid for in accordance with Section 504 of the Standard Specifications.

ALTERNATES NO. 1 & NO. 2

DETAILS OF
SPECIAL APPROACH GUTTERS
ROC ROE & WHITE RIVER RELIEF
STRS. & APPRS. (CLARENDON) (F)
MONROE COUNTY
ROUTE 79 SEC. 13
ARKANSAS STATE HIGHWAY COMMISSION
LITTLE ROCK, ARK.
Engstrom/Modjeski and Masters, Inc.



DRAWN BY: PMR DATE: Sept. 07 FILENAME: b110503_g2
CHECKED BY: YO DATE: Nov. 01 SCALE: 1/2" = 1'-0"
DESIGNED BY: FS DATE: Nov. 01
BRIDGE NO. 06829 & 07027 DRAWING NO. 41905